

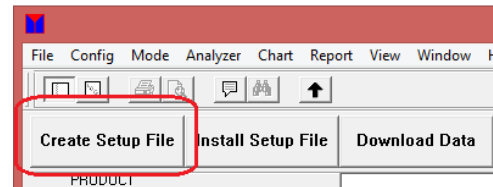
APPLICATION NOTE

Scheduled Run – MPQ Series of Power Quality Analyzers

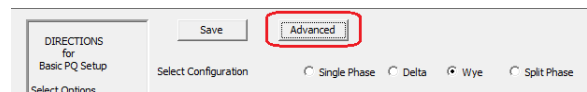
The MPQ Series of Power Quality Analyzers can be programmed to start and stop recording at specific times. This type of test is called a scheduled run.

In order to perform a scheduled run, the analyzers' setup file must be programmed with a start date and time and test duration. To do this, open the Megger PQ PC software.

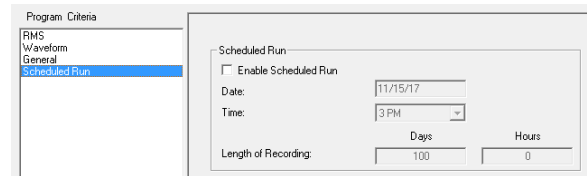
Click on the “Create Setup File” button.



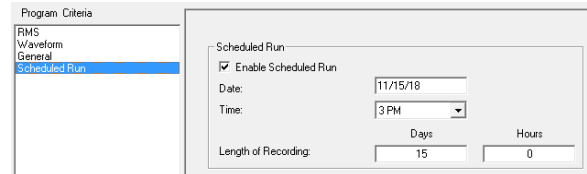
Click on the “Advanced” Button.



Go to the Scheduled Run screen by clicking on “Scheduled Run”.



Enable scheduled run and enter the desired start date and time and the desired length of test in days and hours.



Save the setup file.

Load the setup file into the MPQ Analyzer.

NOTE: *If the setup file is loaded from the PC to the MPQ analyzer via Ethernet or USB connection, the setup file is automatically activated but the scheduled run mode is **NOT** entered. The analyzer must be turned OFF then back ON to activate the scheduled run. Once the analyzer is powered back up, the scheduled run mode is active. Do **NOT** push the record button on the analyzer. The analyzer will automatically start recording when the date and time is reached.*

If Loading a setup file is activated from the front panel of the analyzer, then scheduled run mode is activated. There is no need to cycle the power of the analyzer. The analyzer will automatically start recording when the date and time is reached. Do **NOT push the record button.**