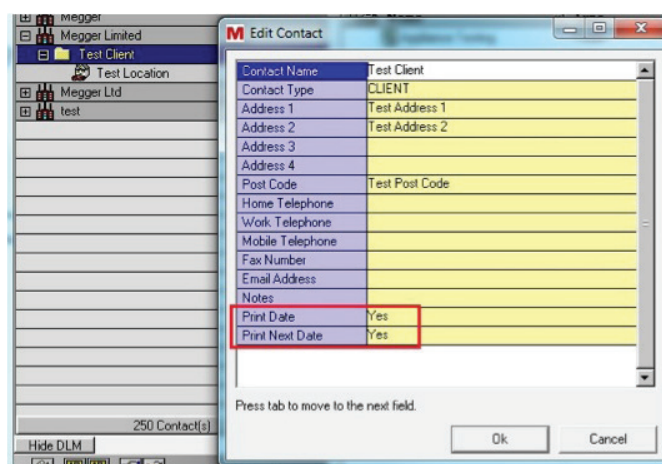


PAT400 2.5 PowerSuite Patch Install- Local Database How-to Guide

This is a step-by-step guide on how to install the PowerSuite patch for the PAT400 V 2.5 firmware. If your PAT400 is firmware version V2.50 or above, or you have upgraded your existing PAT tester to firmware version V2.50, you will need to run this update. This enables the generated PAT400 DB file to be compatible with Download Manager and for the new fields to appear in PowerSuite.

IMPORTANT: make a backup of your full PowerSuite database as the file copy will be deleted during update.

1. Make a backup of your Database (PowerSuite must be closed).
This can be done by finding the 'Data' folder in one of the following file paths (right click on the 'Data' folder, copy to desktop):
 - Windows XP
Start-My Computer-
C:\Documents and Settings\All Users\Documents\Megger Limited\PowerSuite Professional
 - Windows Vista and 7:
Start-Computer-
C:\Users\Public\Documents\Megger Limited\PowerSuite Professional
2. Extract the files from the patch to a known location, possibly a folder on your Desktop.
3. Run the executable patch PAT400 PowerSuite Patch.exe to start the install.
4. Start and log in to PowerSuite and check your version number, it should be 2.1.278.
You will now be able to download V1.05 DB files into PowerSuite and be able to edit the new 'Print Date' and 'Print Next Date' fields within the Client level of the contact tree as shown:



These fields can also be edited on the PAT400 after an upload.

If you encounter any problems with the installation or subsequent use of this update, please contact Megger Technical Support at Dover UK